

HID-Basic BSN/BMH series multi-wattage for SON/CDO/CDM/MH/HPI

BSN 150/100 K427-TS 230/240V 50Hz

Impregnated electromagnetic copper/iron double-wattage ballasts for use with an external series (superimposed) ignitor for CDO, MH, HPI (Plus) and SON lamps

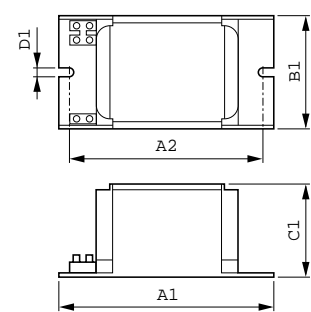
Product data

General Information		Rated Ballast-Lamp Power	
Application Code	K427-TS	150/100 W	
Lamp Type	SON/CDO/CDM/MH/HPI	Recommended Ignitor	
Number of Lamps	1 piece/unit	for SON/CDO/CDM lamps ignitor SKD 578 (913700655366) or series digital SUD40 (913700193591)	
Operating and Electrical		Temperature	
Input Voltage	230 V (default) or 240 V	T-Winding (Max)	
Input Frequency	50 Hz	140 °C	
Power Factor 100% Load (Nom)	0.4	Delta-T Normal Conditions	
Mains Voltage Performance (AC)	-8%+6%	45/80 °C	
Mains Voltage Safety (AC)	-10%+10%	Approval and Application	
Input Current with PF Correction	0.85 A	Active Temperature Protection	
Wiring		No	
Wire Striplength	7.0 mm	Approval Marks	
Ballast Contact Wire Cross Section	1.5 mm ²	CE marking ENEC certificate	
Connector Type	Screw	Product Data	
System characteristics		Full product code	
Capacitor	18µF/250V	872790095370100	
		Order product name	
		BSN 150/100 K427-TS 230/240V 50Hz	
		EAN/UPC - Product	
		8727900953701	
		Order code	
		913700286827	
		Numerator - Quantity Per Pack	
		1	
		Numerator - Packs per outer box	
		415	
		Material Nr. (12NC)	
		913700286827	

HID-Basic BSN/BMH series multi-wattage for SON/CDO/CDM/MH/HPI

Net Weight (Piece)	2.330 kg
--------------------	----------

Dimensional drawing



BSN 150/100 K427-TS 230/240V 50Hz

Product	C1	A1	B1
BSN 150/100 K427-TS 230/240V 50Hz	65.0 mm	134.0 mm	76.0 mm

